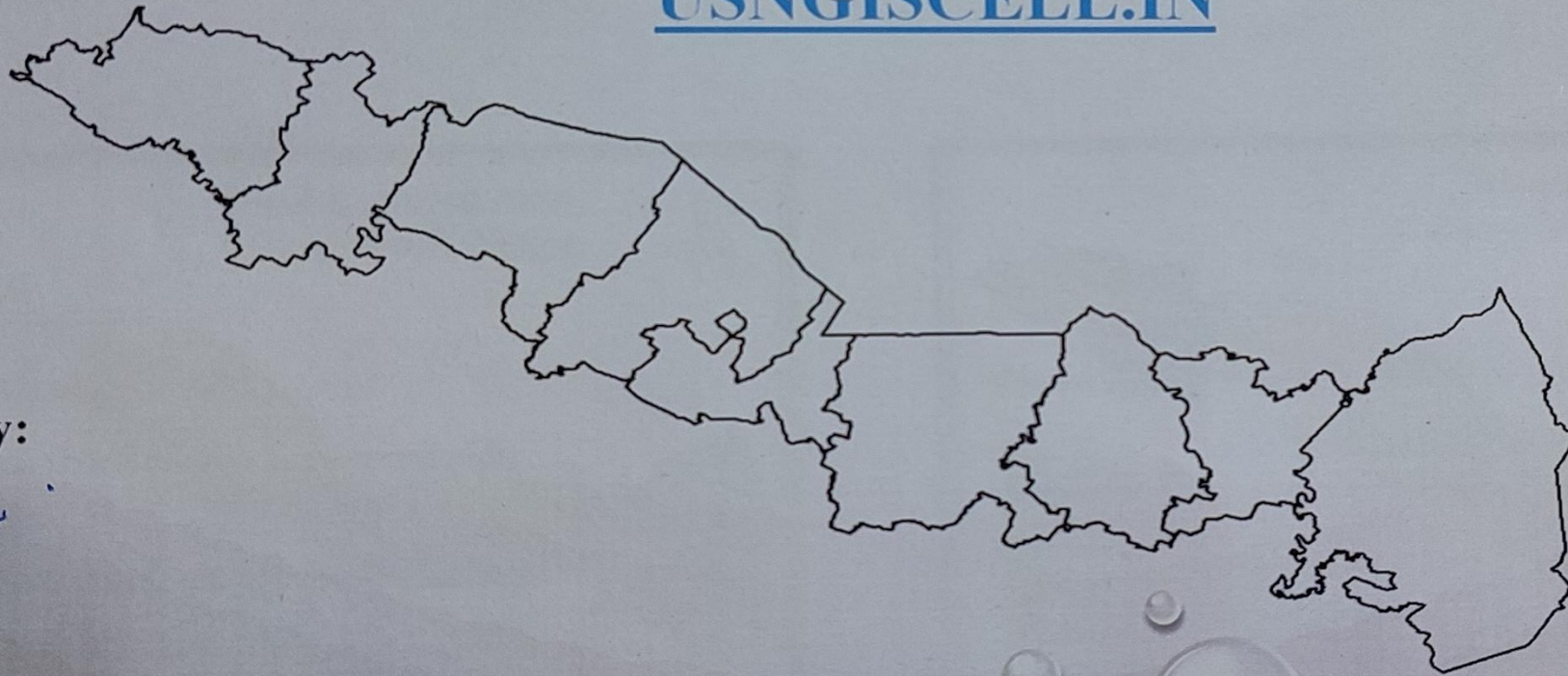




# Report GIS Cell

Udham Singh Nagar  
[USNGISCELL.IN](http://USNGISCELL.IN)



Prepared By:

**Vineet Pal**  
(GIS Analyst)

**Pinkesh Singh Rawat**  
(GIS Technician)

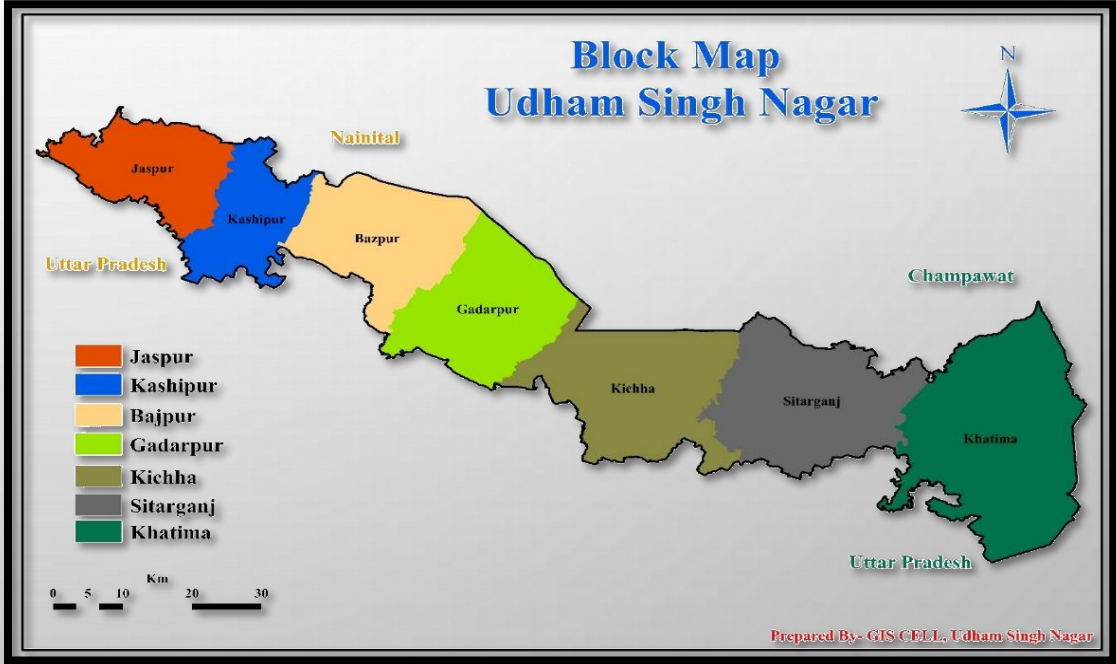
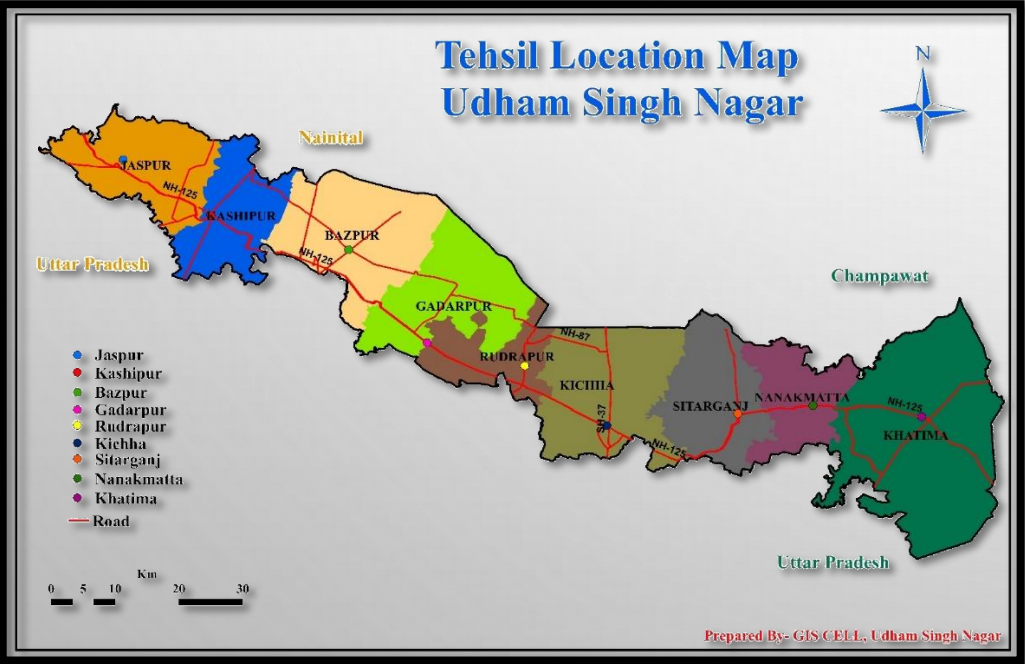
Forwarded By:

**Mr. Lalit Chandra Arya**  
DESTO  
(Udham Singh Nagar)

# Introduction

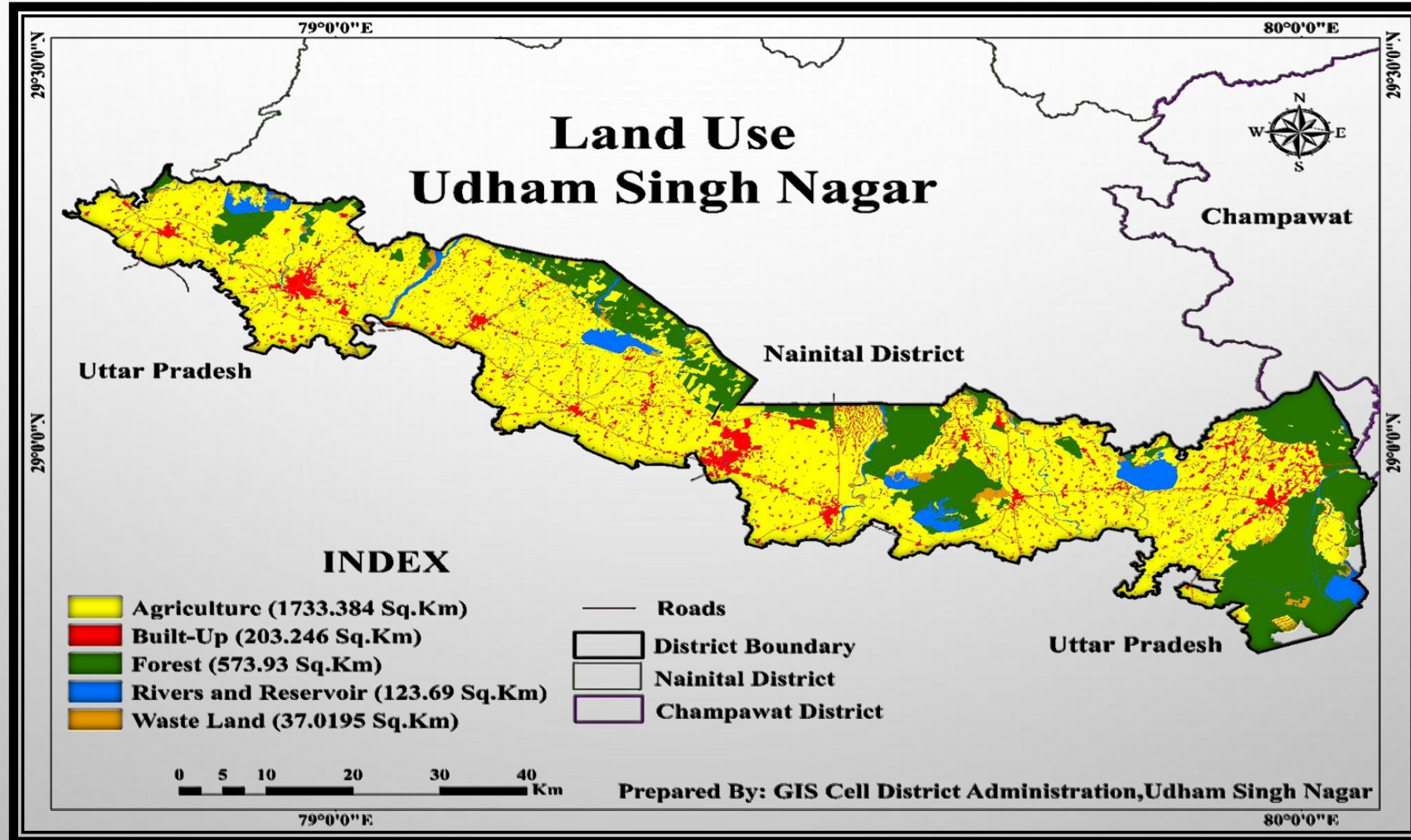
## Udham singh nagar

A district of Uttarakhand state in northern India and Rudrapur is the district headquarters. This district consists of Eight Tehsil (Bazpur, Gadarpur, Jaspur, Kashipur, Kichha, Rudrapur, Khatima, Sitarganj). The district is located in tarai region and is part of kumaon division. It is bounded on the north by Nainital on the northeast by Champawat, on the east by Nepal, and on the south and west by Bareilly, Rampur, Moradabad, Pilibhit and Bijnor District of Uttar Pradesh state. It is named after freedom fighter and Indian revolutionary Udham Singh.



# Geography

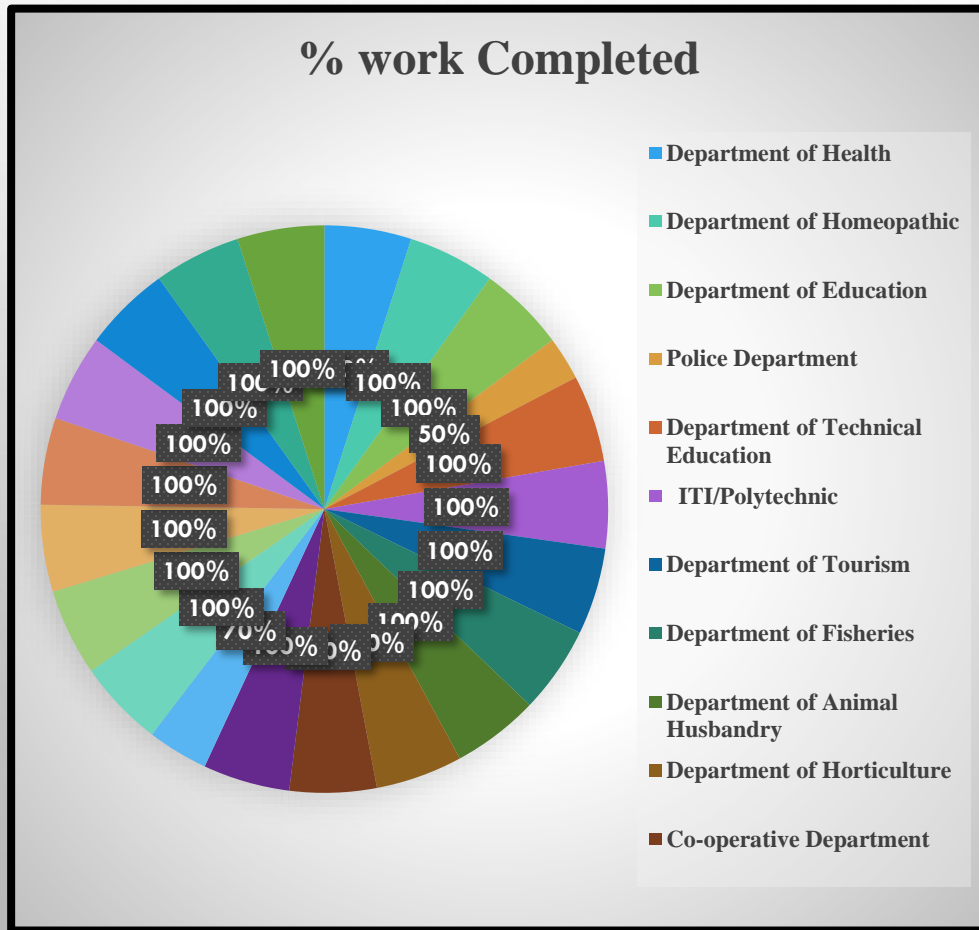
The geographical area of the district is 3055 Km<sup>2</sup> and in aerially it ranks 9<sup>th</sup> in Uttarakhand state. It is located between latitude 28°53' N and 29°23' N and laterally extends between longitudes 78° 45' E and 80° 08' E. Forest covers 5.0% area of the district. The total population of the district is 12, 35,614 (Census: 2001), out of which male, female population is 6, 49,484 and 5, 86,130 respectively. It ranks third in the state in respect of the population. The population density is 405.45 persons/km<sup>2</sup>. The overall literacy rate is 64.86%.



# Data Collection

20 Departments data collection, analyzing data and making of GIS database has been completed as per centralized format. Remaining departments work is ongoing 40% of data has been collected of every department.

GIS Cell, Udham Singh Nagar has made a portal of the district in which all the GIS information of the Departments have been uploaded and the work is in progress. <https://usngiscell.in/index.html>

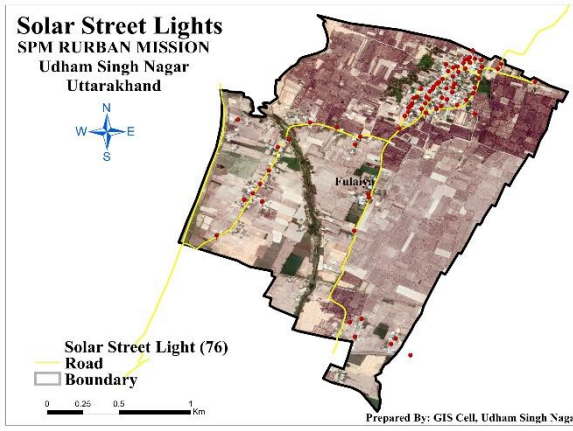
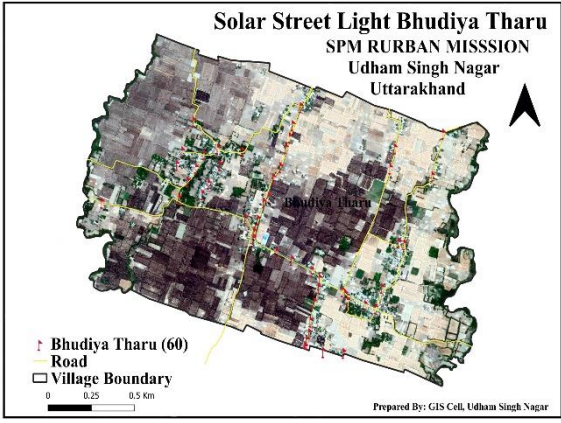
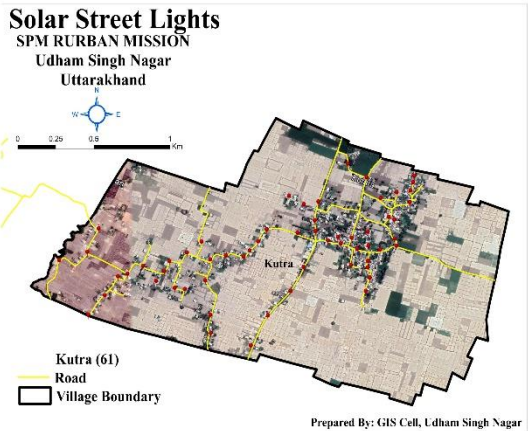
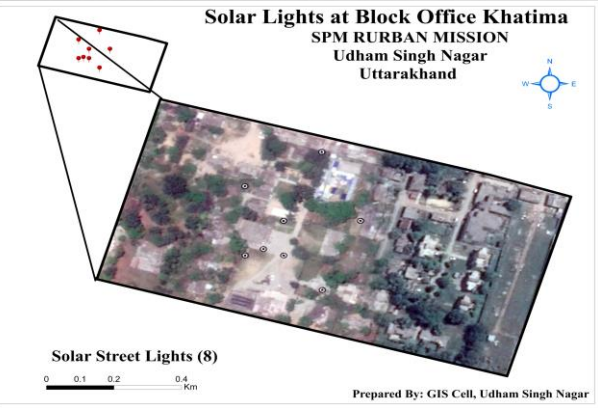
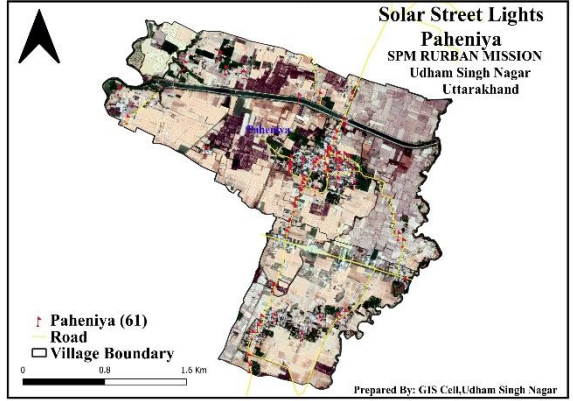
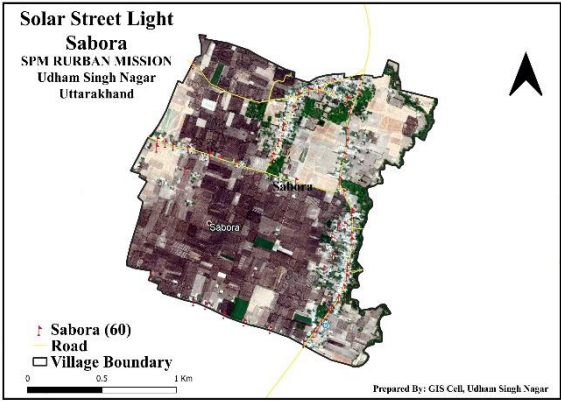
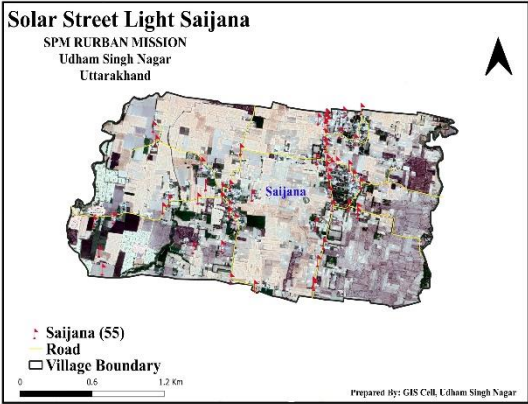
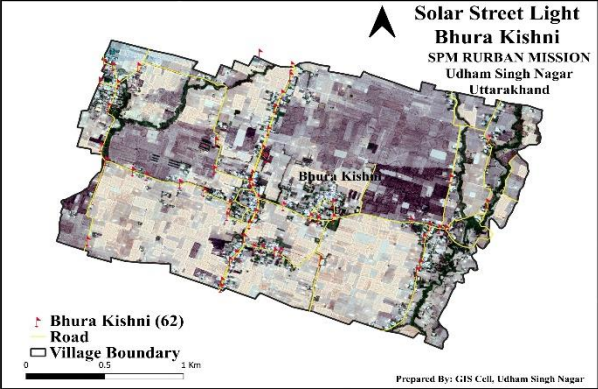


Name of the Department	Data Collected	GIS Database	Shape-file	Map Generation
Department of Health <a href="https://usngiscell.in/Health.html">https://usngiscell.in/Health.html</a>	Collected as per centralized format	Completed	Yes	Yes
Department of Homeopathic <a href="https://usngiscell.in/Homeopathic.html">https://usngiscell.in/Homeopathic.html</a>	Collected as per centralized format	Completed	Yes	Yes
Department of Education <a href="https://usngiscell.in/Education.html">https://usngiscell.in/Education.html</a>	Collected as per centralized format	Completed	Yes	Yes
Police Department	50% Collected as per centralized format	Partially Completed	Yes	Yes
Department of Technical Education ITI/Polytechnic <a href="https://usngiscell.in/Polytechnic.html">https://usngiscell.in/Polytechnic.html</a>	Collected as per centralized format	Completed	Yes	Yes
Department of Tourism <a href="https://usngiscell.in/Tourism.html">https://usngiscell.in/Tourism.html</a>	Collected as per centralized format	Completed	Yes	Yes
Department of Fisheries <a href="https://usngiscell.in/Fisheries.html">https://usngiscell.in/Fisheries.html</a>	Collected as per centralized format	Completed	Yes	Yes
Department of Animal Husbandry <a href="https://usngiscell.in/Animal%20Husbandary.html">https://usngiscell.in/Animal%20Husbandary.html</a>	Collected as per centralized format	Completed	Yes	Yes
Department of Horticulture <a href="https://usngiscell.in/Horticulture.html">https://usngiscell.in/Horticulture.html</a>	Collected as per centralized format	Completed	Yes	Yes
Co-operative Department <a href="https://usngiscell.in/Co-operative%20Societies.html">https://usngiscell.in/Co-operative%20Societies.html</a>	Collected as per centralized format	Completed	Yes	Yes
NIC	Collected as per centralized format	Completed	Yes	Yes
Department of Forest <a href="https://usngiscell.in/Forest.html">https://usngiscell.in/Forest.html</a>	70% Collected as per centralized format	Partially Completed	Yes	Yes
Employment office	Collected as per centralized format	Completed	Yes	Yes
Department of Sports <a href="https://usngiscell.in/Stadium.html">https://usngiscell.in/Stadium.html</a>	Collected as per centralized format	Completed	Yes	Yes
Irrigation	Collected as per centralized format	Completed	Yes	Yes
Department of KVIC	Collected as per centralized format	Completed	Yes	Yes
UREDA <a href="https://usngiscell.in/Ureda.htm">https://usngiscell.in/Ureda.htm</a>	Collected as per centralized format	Completed	Yes	Yes
Election Commission	Polling Booths ,Polling boundary	50% Completed	Yes	Yes
Co-operative Department	Collected as per centralized format	Completed	Yes	Yes
Department of Rural Development	Collected as per centralized format	Completed	Yes	Yes

# विशेष कार्य यदि किये हो:-

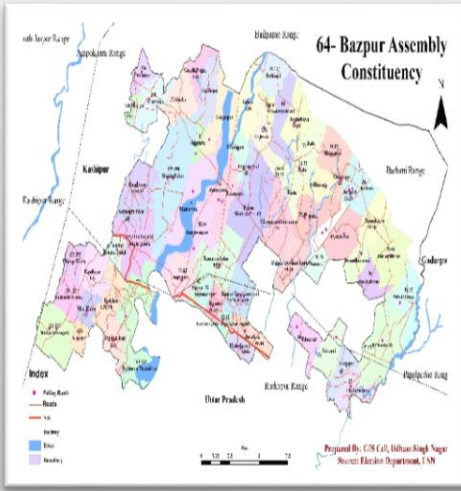
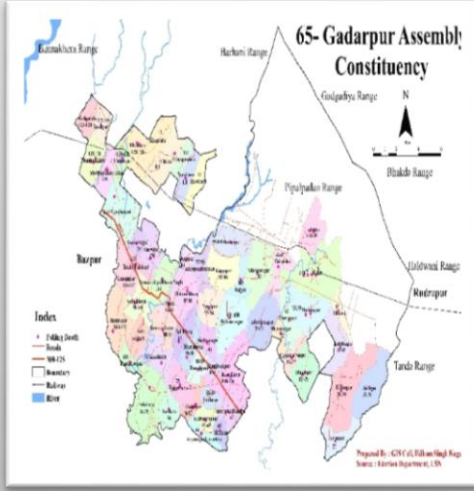
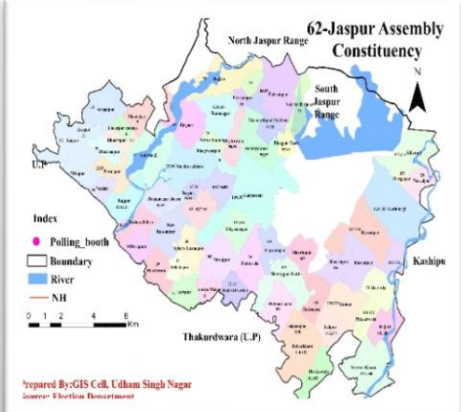
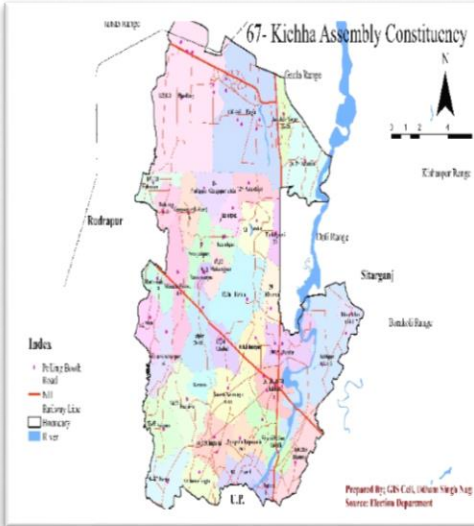
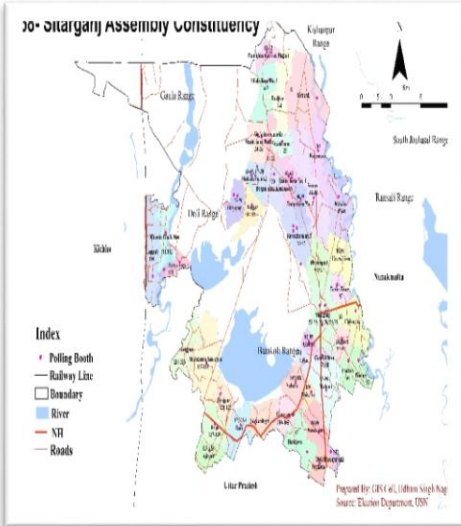
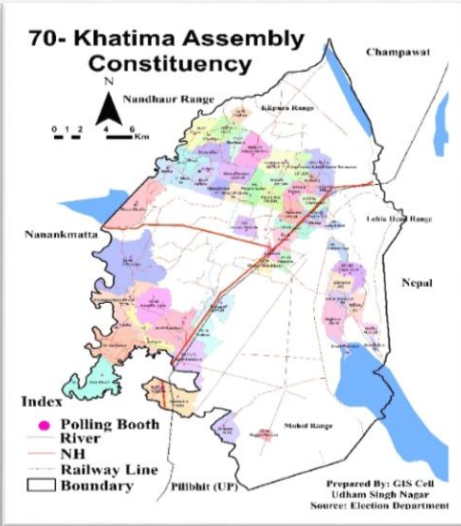
## 1) UREDA, Udham Singh Nagar.

Detailed Satellite mapping of solar light installed in **RURBAN Mission** in **7 cluster villages of Khatima**.

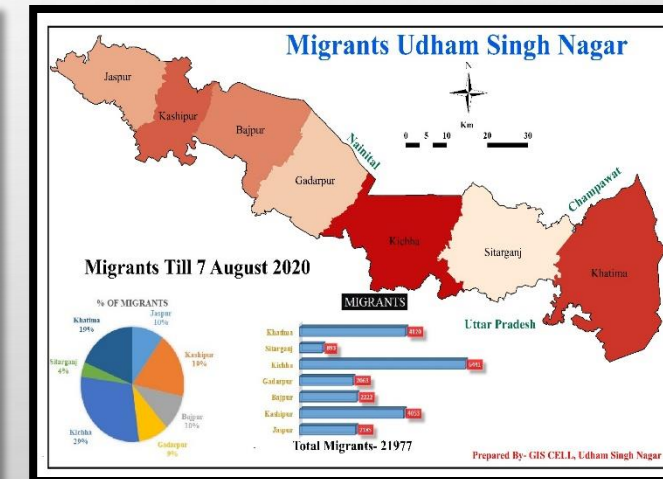
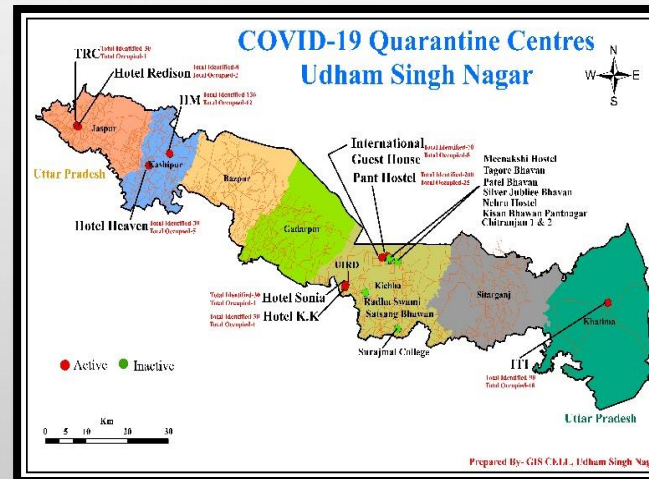
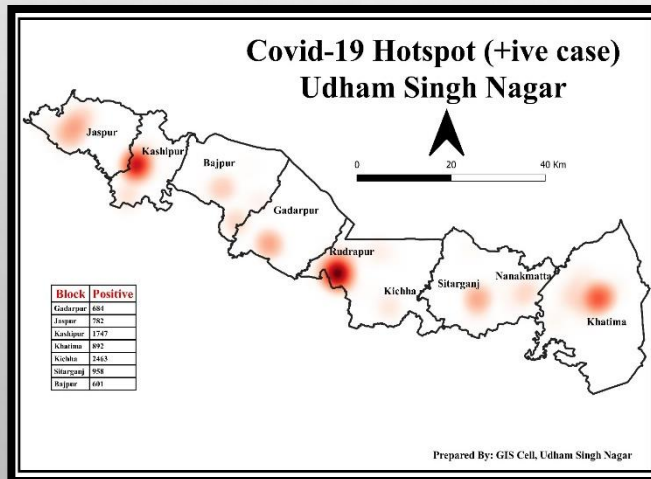
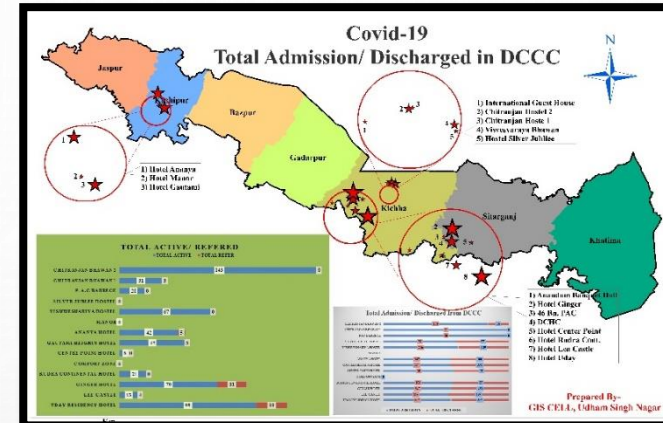
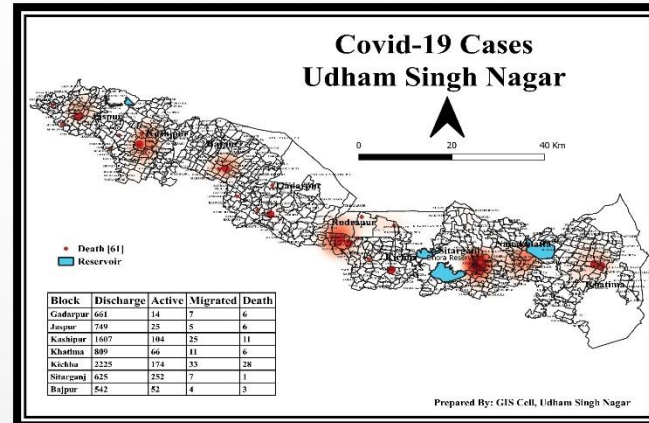
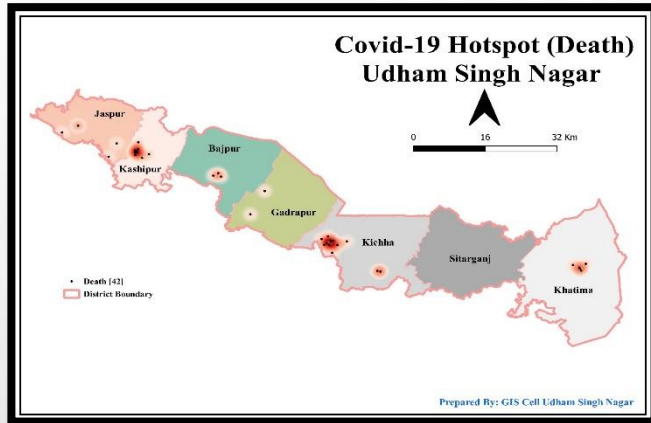


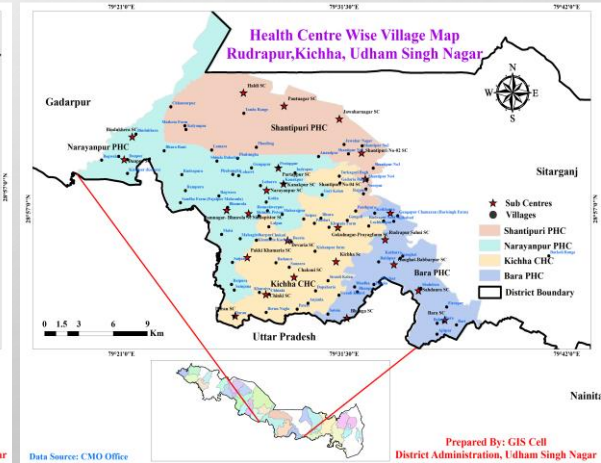
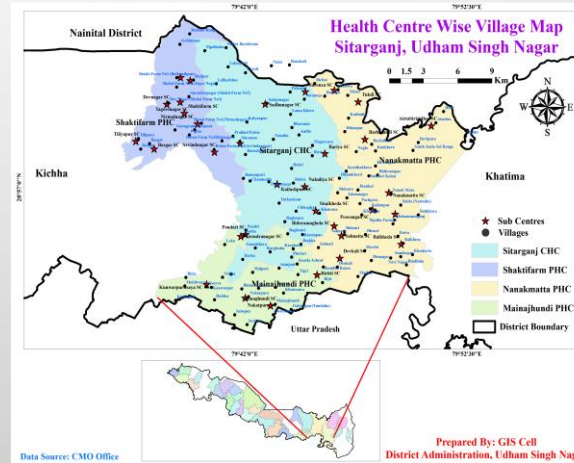
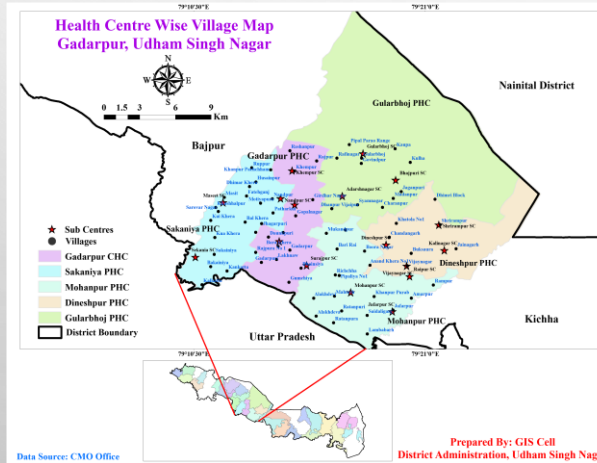
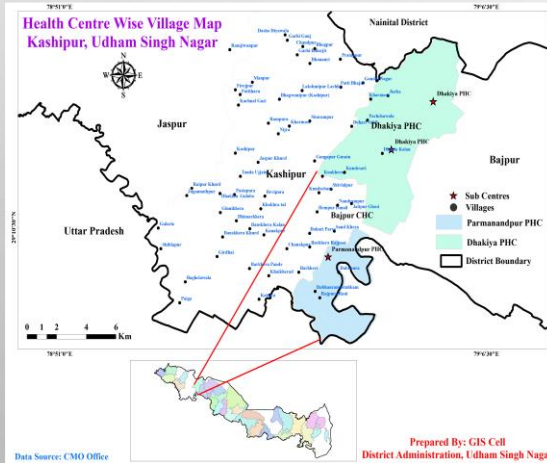
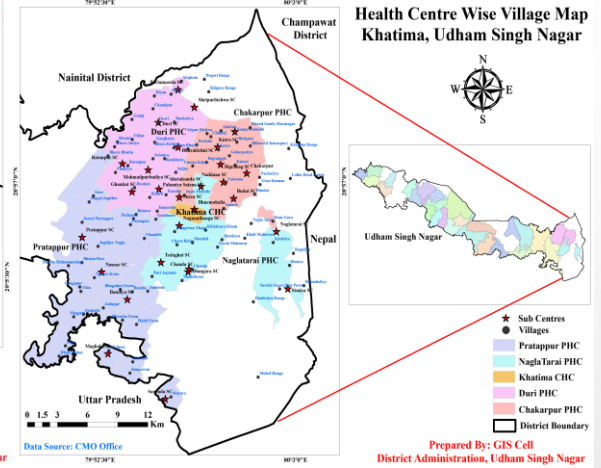
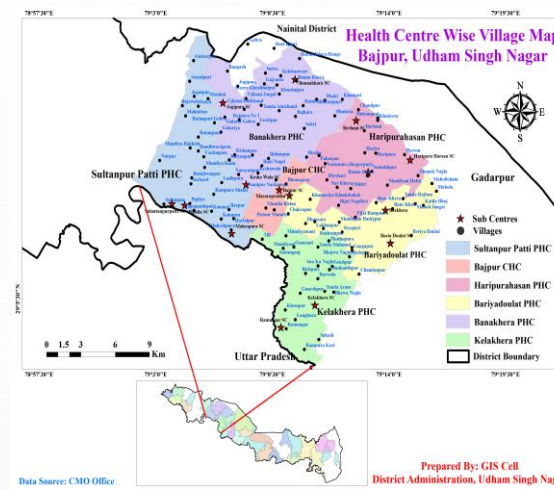
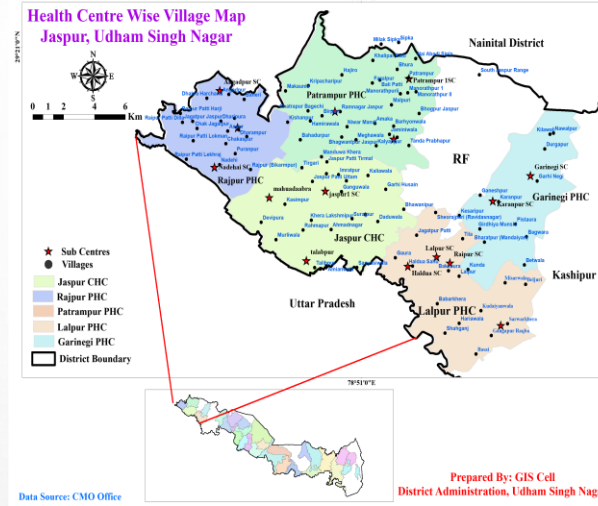
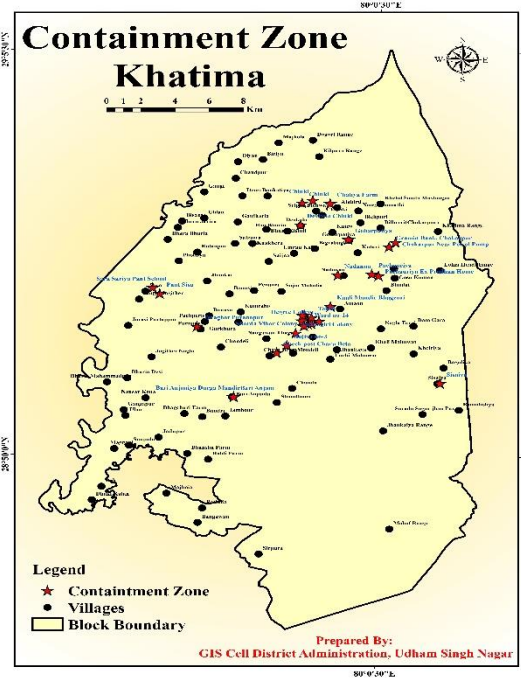
## 2) Election Commission

### Correction and relocation of Polling booths of district Udham Singh Nagar.

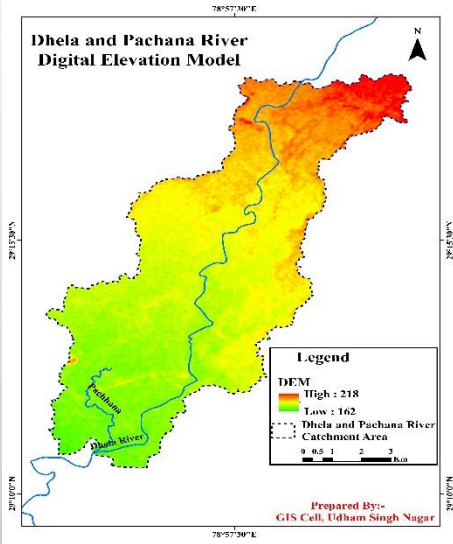
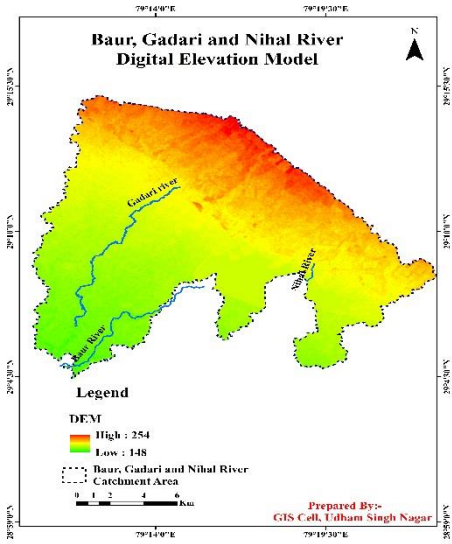
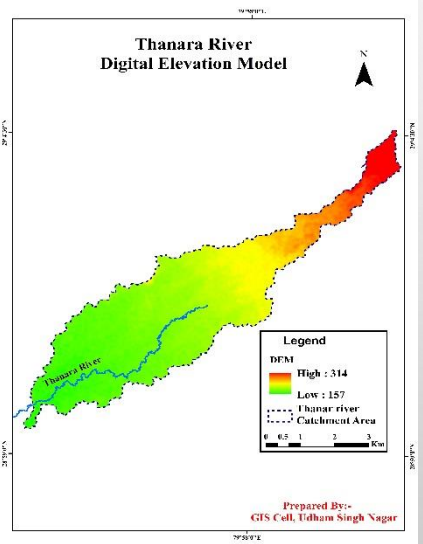
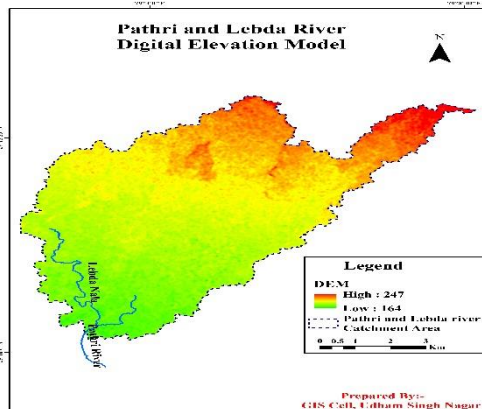
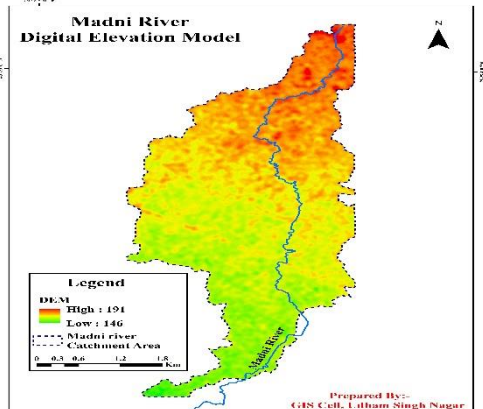
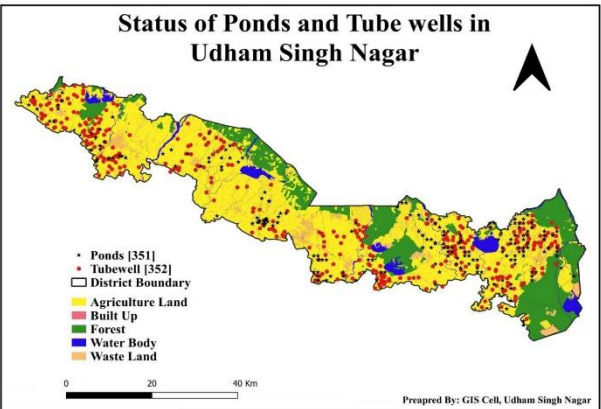
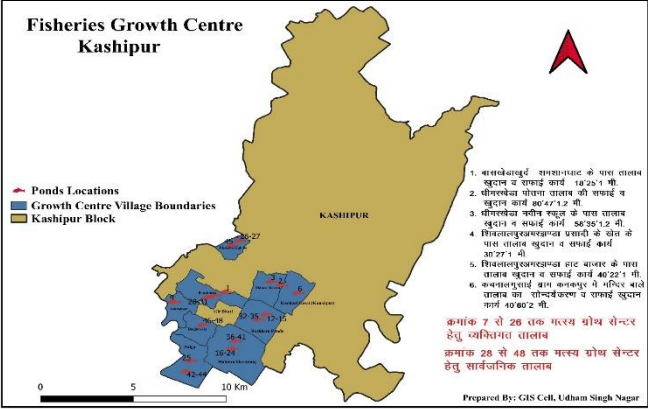


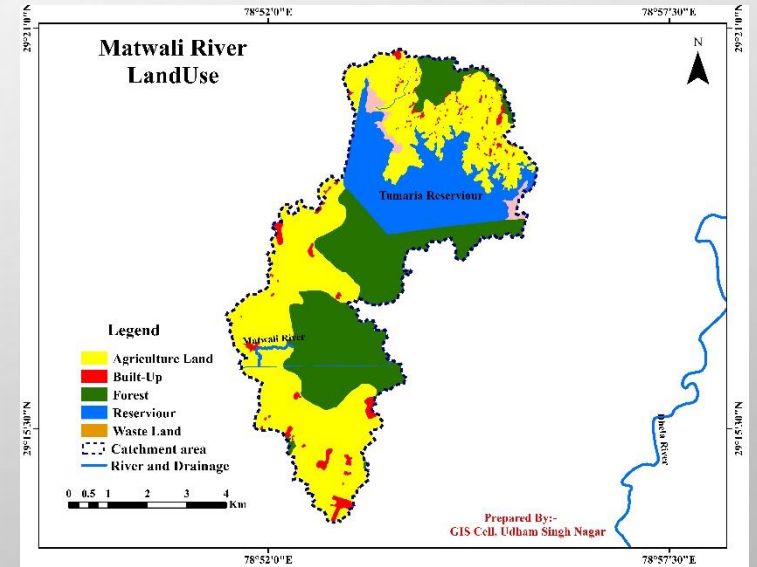
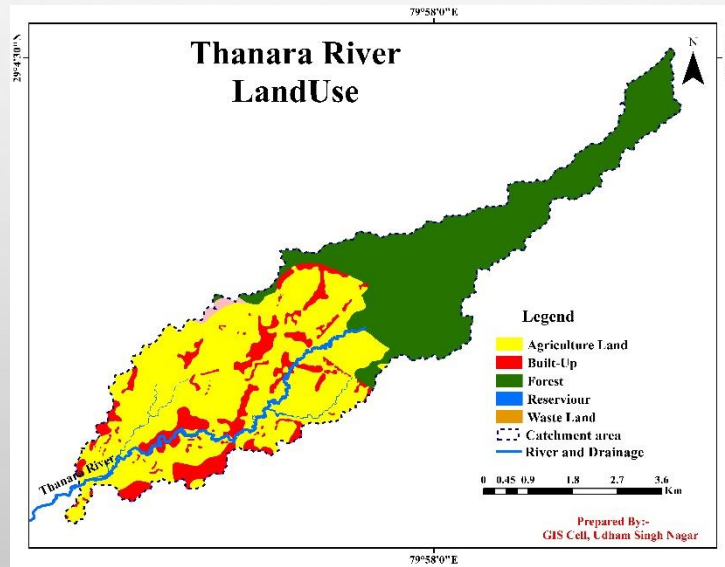
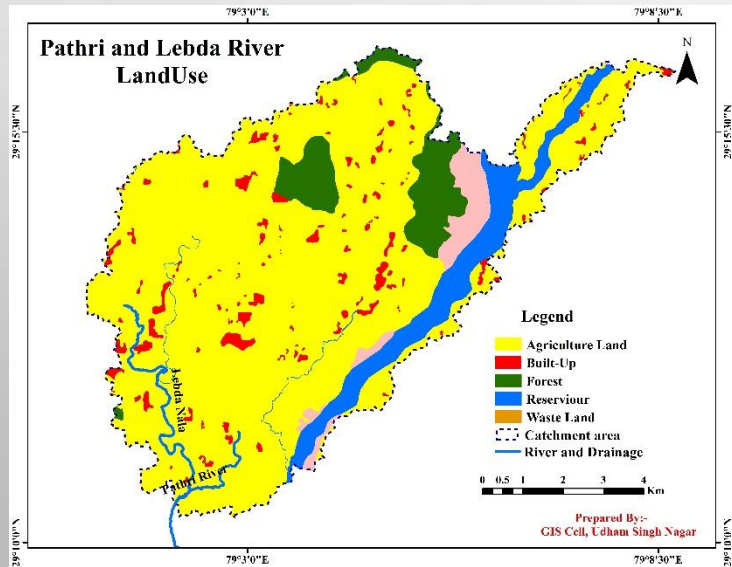
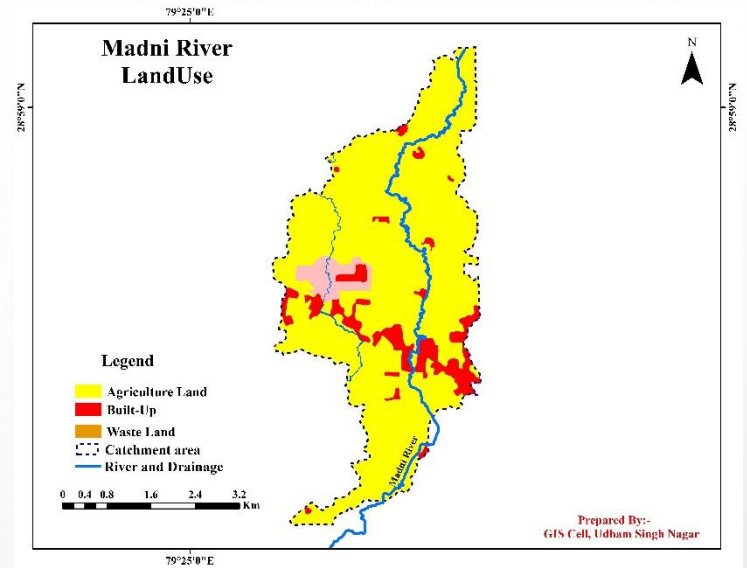
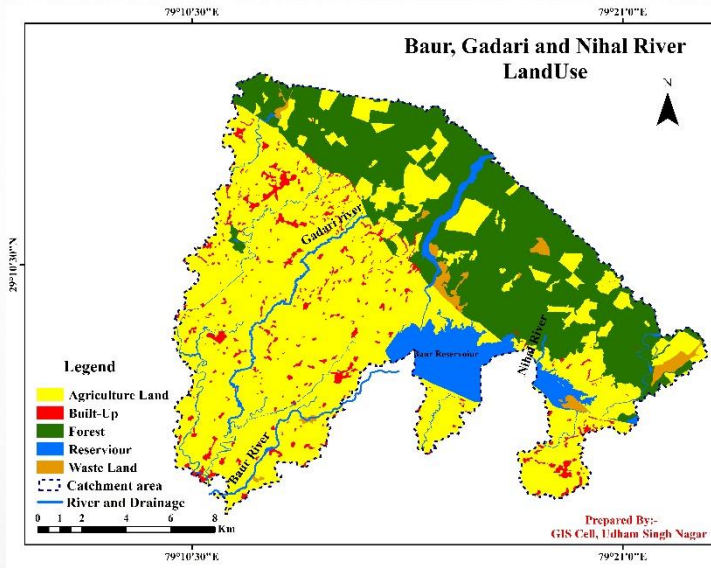
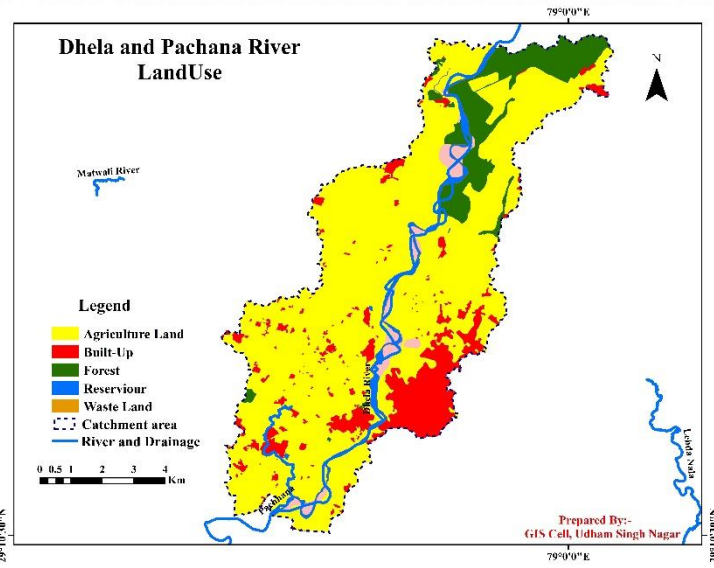
### 3) Corona Mapping



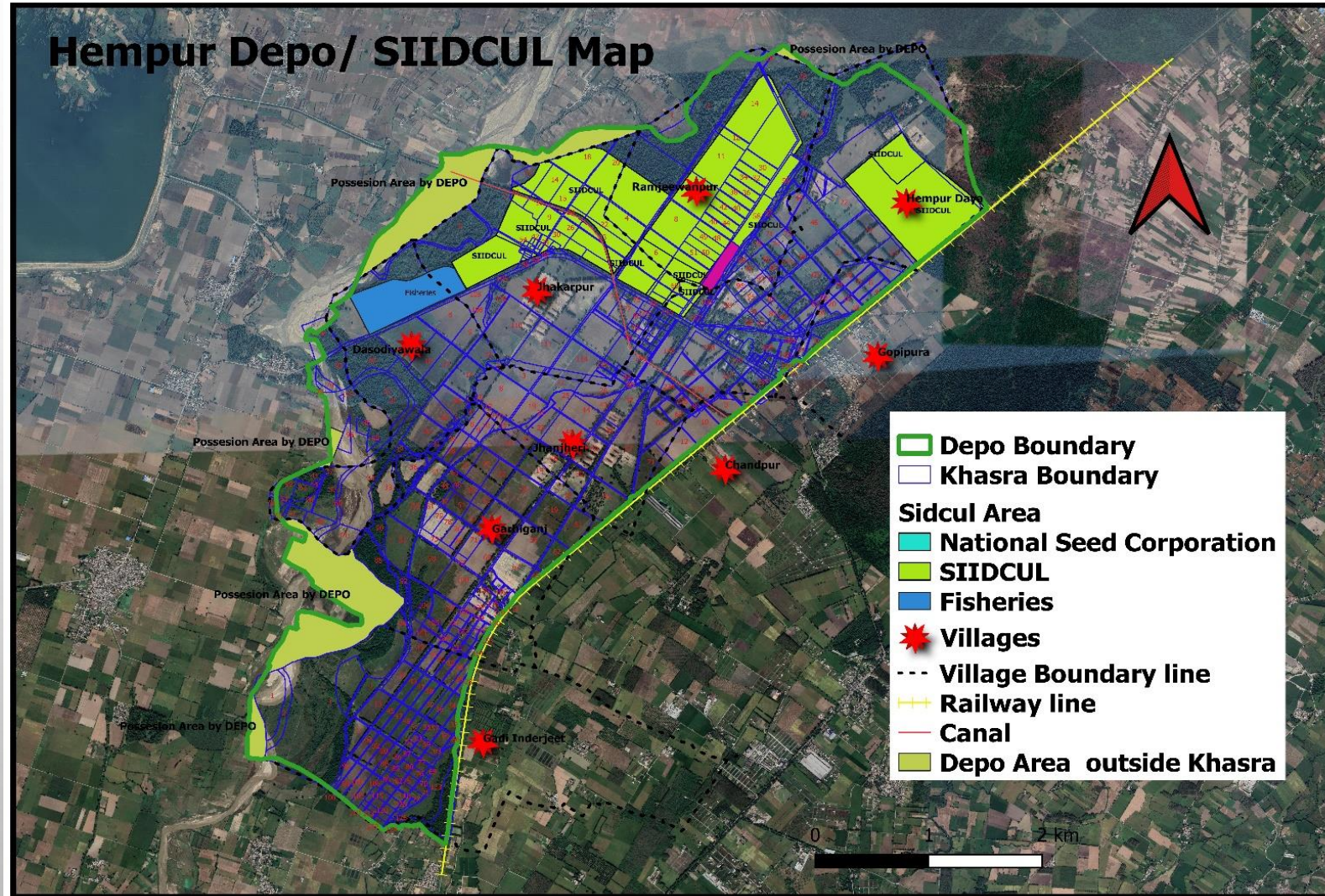


# 4) MGNREGA





## 5) Hempur Depo Map, Kashipur



## तकनीकी सुझाव / प्रोजेक्ट आदि हेतु :-

- 1) जैसे जैसे टेक्नोलॉजी में विकास हो रहा है उसी प्रकार GIS सेल के कार्मिकों को नए नए सॉफ्टवेर का ज्ञान आदि ट्रेनिंग के माध्यम से साल में 2 बार जरूर करवाना चाइये.
- 2) SDI पोर्टल को जल्द से जल्द चालू किया जाना चाइये ताकी GIS तकनीक का फायदा उठाया जा सके विभिन्न विभागों के द्वारा.

### अन्य सुझाव:-

जी.आई.एस प्रकोष्ठ के कार्मिक उच्च शिक्षा एम.एस.सी. जी.आई.एस. एण्ड रिमोट सेंसिंग जो पृथ्वी विज्ञान का एक तकनीकी विषय है कार्मिकों को केन्द्र सरकार व राज्य सरकार के विभिन्न संस्थानों में कार्य करने का अनुभव रहा है व जी.आई.एस. सैल में वर्ष 2015 से वर्तमान तक निरन्तर अपनी सेवायें दे रहे हैं अभी तक 2015 से लेकर आतिथी तक जी.आई.एस. कार्मिकों को कोई वेतन वृद्धि नहीं की गयी है जिससे कार्मिकों के सामने अपने आर्थिक समस्यायें उत्पन्न हो रही जबकि कार्मिकों द्वारा लोक सभा, विधान सभा, पंचायती निर्वाचनों आपदा प्रबन्धन के कार्यो, विभिन्न प्रकार के धार्मिक एवं पर्यटन के 13 जिले 13 डेस्टिशन, कोविड-19 आदि कार्यो में महत्वपूर्ण योगदान दिया जा रहा है।

# Thank You

<https://usngiscell.in/index.html>